



Installing Communicate In Print 2.8 Performing an Administrative Install



This version of Communicate: In Print comes with the Winter 2008 free symbol update, including over 3,000 new symbols. These symbols are stored in special archives. To create wordlist with these new symbols we have also released the new 'Wordlist Manager'. The Wordlist manager and a free trial of SymWriter are available in this installer.

Wordlist Manager

To perform a administrative installation of the Wordlist manager, navigate to The 'Wordlist Manager' folder on your In Print CD. You will find 'setup.msi' there. The instructions for performing an admin install are in the 'Documents' folder on the CD, called 'Network installation symwriter and wordlist manager.pdf'

Installing Communicate: In Print

Creating an MSI for 'Communicate: In Print 2' with your registration code and folder options already included.

To save time and reduce errors during installation, you can perform an administrative installation of 'Communicate: In Print 2'. This will allow you to create a new installer that saves your registration code and folder settings.

Folder Information

Where everything needs to go

The installed program will need to know three paths. These are:

Shared Resources

The 'Communicate Files' folder. This should be installed to the 'Documents/Shared Documents' folder of the 'All Users' profile.

Widgit Resources

The 'WidResources' folder. This should be installed to the 'Program Files' folder of the local machine.

Widgit Pictures

The 'Widgit Pictures' folder. This should be installed to the 'Program Files' folder of the local machine.

You can only choose the install location of the Communicate Files Feature during an Administrative Install. This can be installed anywhere on the local machine or on any available network drive.

It is recommended that you copy the shared resources (Communicate Files) to a shared location (such as the 'All Users' profile on your network).

Using a Folder on the Network

The quickest and easiest way to get your network installation up and running.

If the 'Shared Resources' (Communicate Files) are going to be stored in a folder on the network, you will not need them to be installed by every client.

Choose a sensible location on the network where students have at least 'read' access and teachers are able to create and edit files (the 'Documents' folder within the 'All Users' profile is the recommended location).

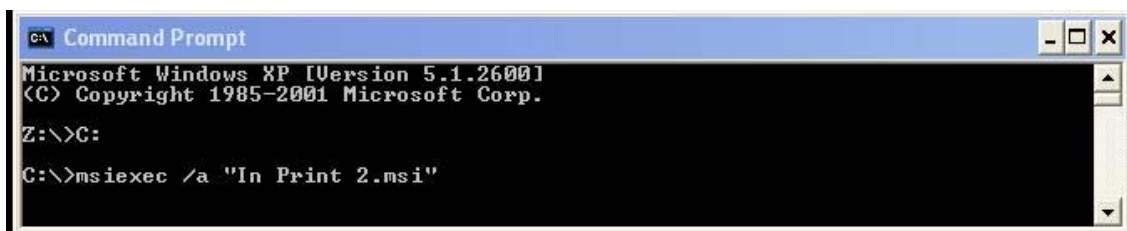
During the Admin install you will have the opportunity to install the 'Communicate Files' feature to the network location immediately, thus negating the need for it to be part of the Image msi you are creating (So it doesn't get installed every time the image msi is run). .

Creating the MSI

Create an installer with all your saved settings and registry information.

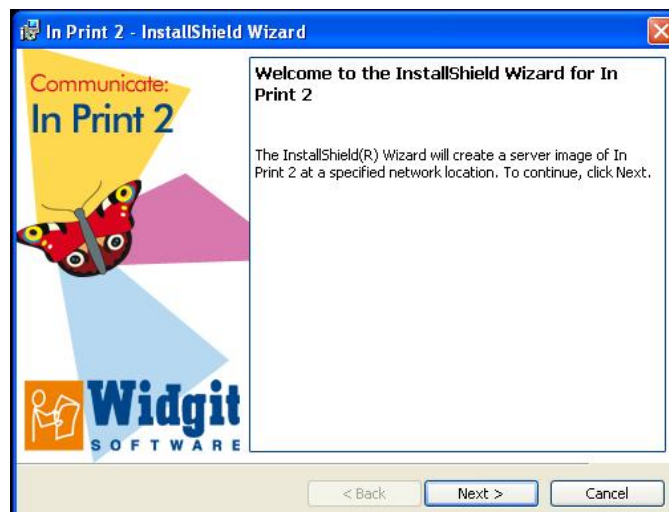
Log in with administrative privileges, ensuring that you have access to a folder where you can store the new MSI and the supporting files it will create.

From the 'Start' menu, select 'Program Files' then 'Accessories' then 'Command Prompt'. A command prompt window will open. Now enter the path to the location of the In Print 2.msi and press enter(see below), then type: `msiexec /a "In Print 2.msi"` and press enter again.



```
Command Prompt
Microsoft Windows XP [Version 5.1.2600]
(C) Copyright 1985-2001 Microsoft Corp.
Z:\>C:
C:\>msiexec /a "In Print 2.msi"
```

The administrative installation will begin. The following dialog will appear:



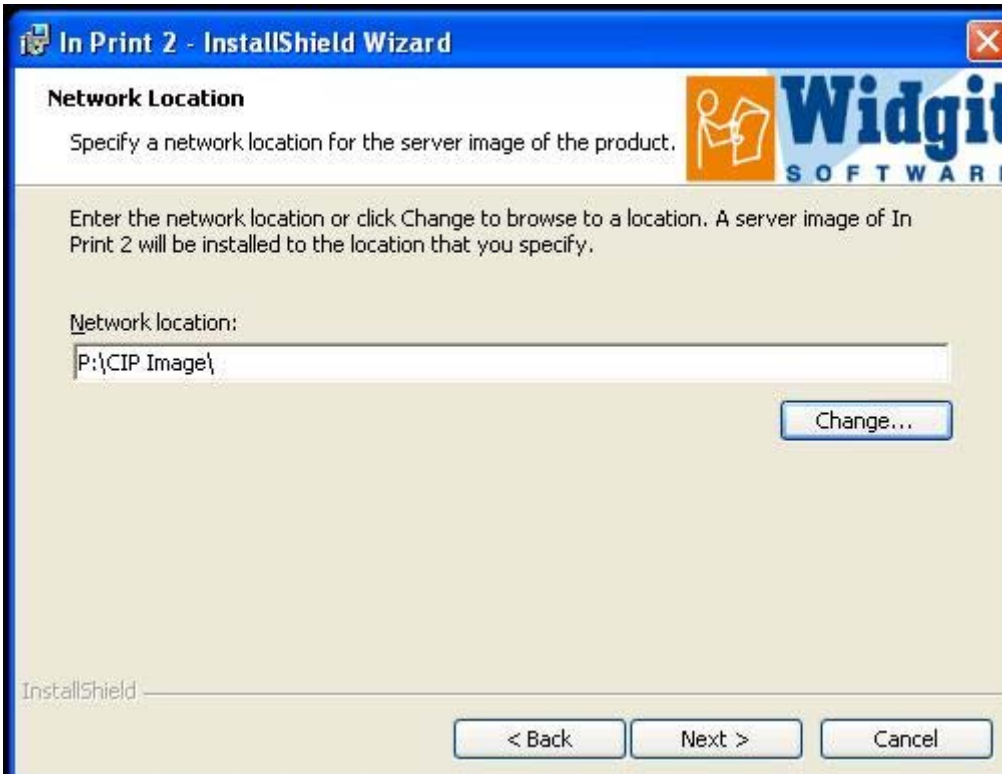
Click 'Next' and follow the instructions on the screen.

Enter your details and registration code. Remember that your registration code must be entered in all lower case letters.



The screenshot shows the 'Customer Information' step of the 'In Print 2 - InstallShield Wizard'. The window title is 'In Print 2 - InstallShield Wizard' and it features the 'Widgit SOFTWARE' logo. The instructions say 'Please enter your information.' There are three input fields: 'User Name:' with 'Tester' entered, 'Organization:' with 'Widgit' entered, and 'Validating registration code:' with four empty boxes separated by dashes. Below these is a section 'Install this application for:' with two radio buttons: 'Anyone who uses this computer (all users)' (selected) and 'Only for me (Tester)'. At the bottom are buttons for '< Back', 'Next >', and 'Cancel'.

Choose the network location where you want the new Image Msi to be created to.



The screenshot shows the 'Network Location' step of the 'In Print 2 - InstallShield Wizard'. The window title is 'In Print 2 - InstallShield Wizard' and it features the 'Widgit SOFTWARE' logo. The instructions say 'Specify a network location for the server image of the product.' and 'Enter the network location or click Change to browse to a location. A server image of In Print 2 will be installed to the location that you specify.' There is a text box for 'Network location:' containing 'P:\CIP Image\'. A 'Change...' button is located to the right of the text box. At the bottom are buttons for '< Back', 'Next >', and 'Cancel'.

This next screen allows you to choose the location of where you want the 'Shared Resources' (Communicate Files) to be installed. It is recommended that you leave this set to the default path: C:\Documents And Settings\AllUsers\Documents\Widgit\Communicate Files, unless you are installing it to a network share.



If you chose to copy the 'Shared Resources' (Communicate Files) to a folder on the network (make sure the checkbox is ticked) it will be installed as soon as you click next on this screen.



Remember: An administrative installation will not install the program. It will save your installation choices and use them to create a new MSI installer.



Copying the files and creating the MSI installer will take several minutes.

When the files have been copied and the MSI has been created, you can deploy the MSI across your network or run it on as many clients as you have a license for.

If you have any questions, please contact support.

Widgit Technical Support
Widgit Software
01926 333680
support@widgit.com