



Web:
Email:
Tel:

www.DeafBooks.co.uk
info@deafbooks.co.uk
01642 580505

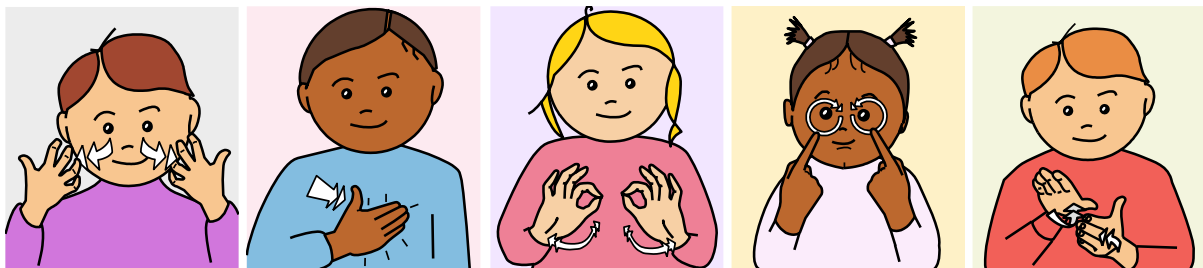
Let's Sign BSL Early Years Vocabulary

Introduction

Welcome to the Let's Sign BSL vocabulary pack for baby signing and early years. The pack contains a carefully chosen selection of 626 signs as used by babysigners, nurseries and other childcare and early years settings.

This pack includes signs that cover topics such as:

Greetings	Colours	Weather	Christmas	Transitions
Toys	Questions	Seasons	Instructions	Nursery Phrases
Animals	Family	Clothes	Activities	In the home
Pets	People	Feelings	World about us	



The Glossary provides a list of contents by the graphic file names which correspond to those contained in the BSL Adult vocabulary of 2,500 which also available on licence.

Many signs have more than one version and the signs chosen are those versions considered to be the most appropriate for early years settings and also includes a number of regional and alternative variations.

Some entries have other common additional meanings next to the entry in brackets and start with a capital letter for example Same (Like) and some are followed by a word to clarify the meaning in context and these start with a lower case letter for example Orange (fruit, colour).

Also included are Numbers 1 – 10 in the two most commonly used systems

Numbers 6 – 9 have file names such as 'eight (child)' – and refer to the two-handed versions that are generally used with children – adult versions are usually one-handed.

The graphics are in emf format and in folders ready to insert into documents to make topic sheets, flashcards etc. to print or display. They are now also available as part of the Communicate Suite of Widgit Software programs and are installed with wordlists to easily locate and automatically import signs as the words are typed.

The graphics are in black and white line drawings and colour versions, in separate folders. The fingerspelling alphabet graphics are also included.

The recommended reference for searching for meanings/variations of these graphics is the Let's Sign Dictionary 2nd Edition. The book has been designed to support and complement the graphics packs and contains all of the signs available in the full 2,500 sign collection of Let's Sign graphics from which these Early Years signs are taken. The book is an essential reference tool which contains the necessary descriptions of movements, additional meanings, regional variations, use in context and index to locate the correct signs. The 6,000 word index is designed to help users locate the graphics needed by their file name and find different meanings associated with each sign.

Many more signs are available as learners progress – please email for details.

Every effort has been taken to include the most appropriate words/signs and more are available on request including the adult vocabulary of 2,500 signs.