

Sir Frank Whittle

Text Book

Sir Frank Whittle

Text

Published by Widgit Software

© Widgit Software 2023

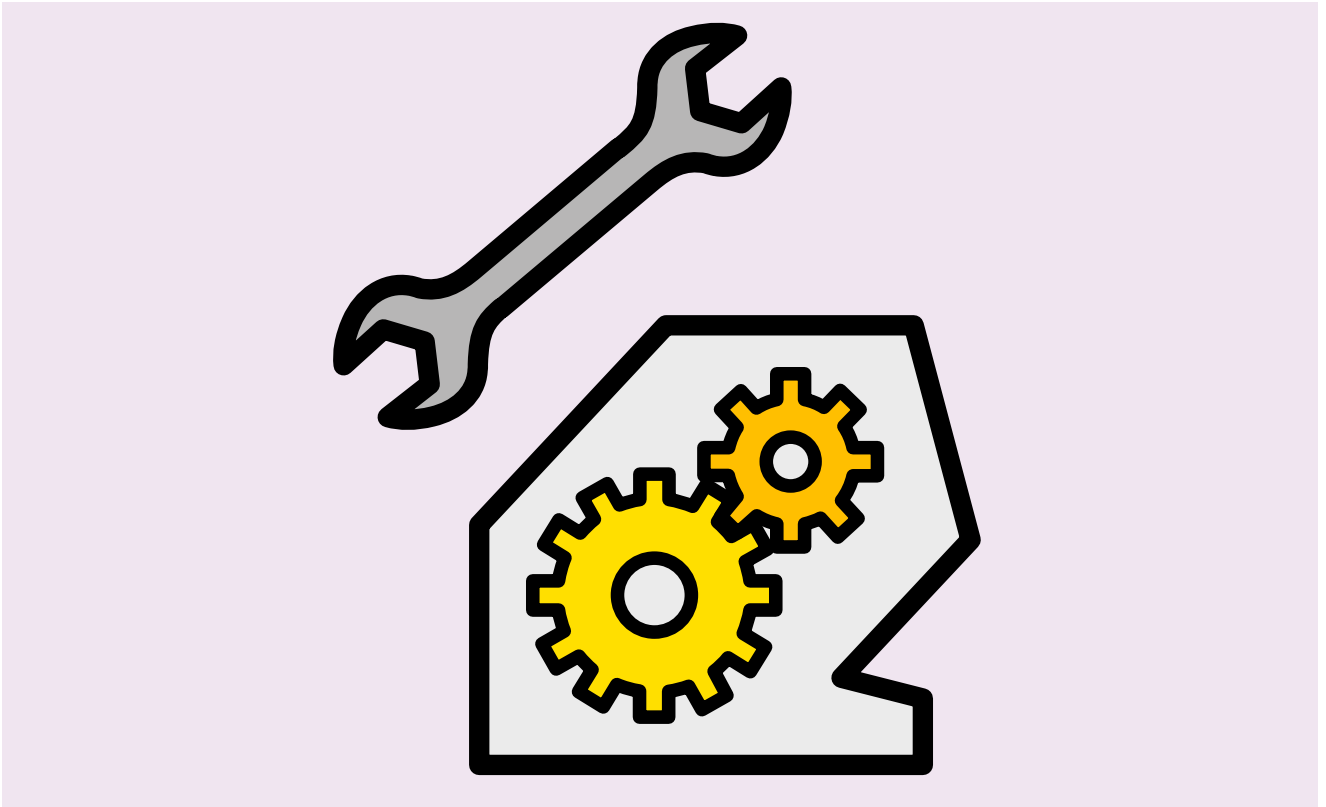
Widgit Symbols © Widgit Software 2002 - 2023

Tel: 01926 333680

Email: info@widgit.com

Web: www.widgit.com

All of the materials are copyright. Files and documents printed from those files may be used within the purchasing organisation. They may not be passed to other centres.



Sir Frank Whittle was born in Coventry in 1907.

He was the first son of Moses and Sara.

When Frank was 9 they moved to Leamington Spa.

Here Frank's father bought an engineering company.

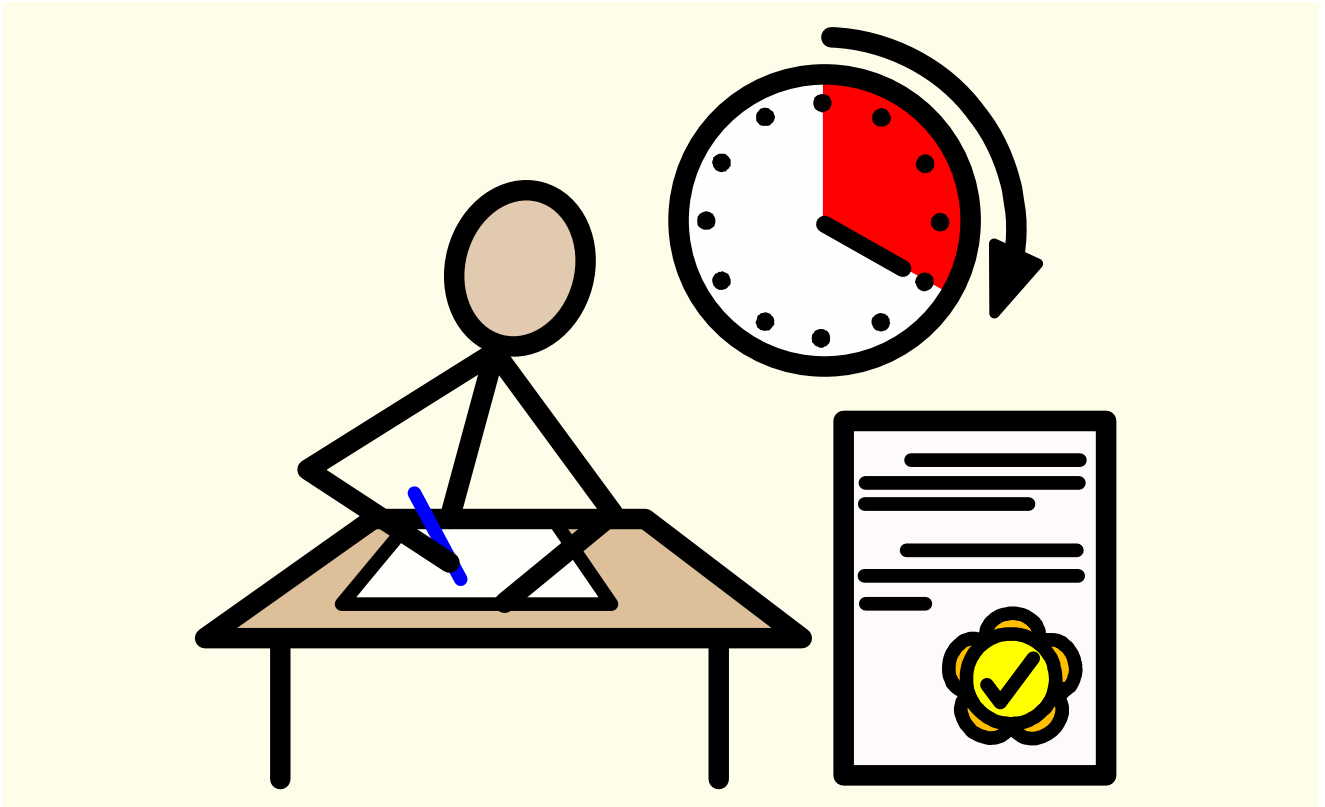


Frank began helping his father in his workshop.

Frank developed practical engineering skills.

Frank was an enthusiastic reader.

Frank studied astronomy, engineering and turbines.

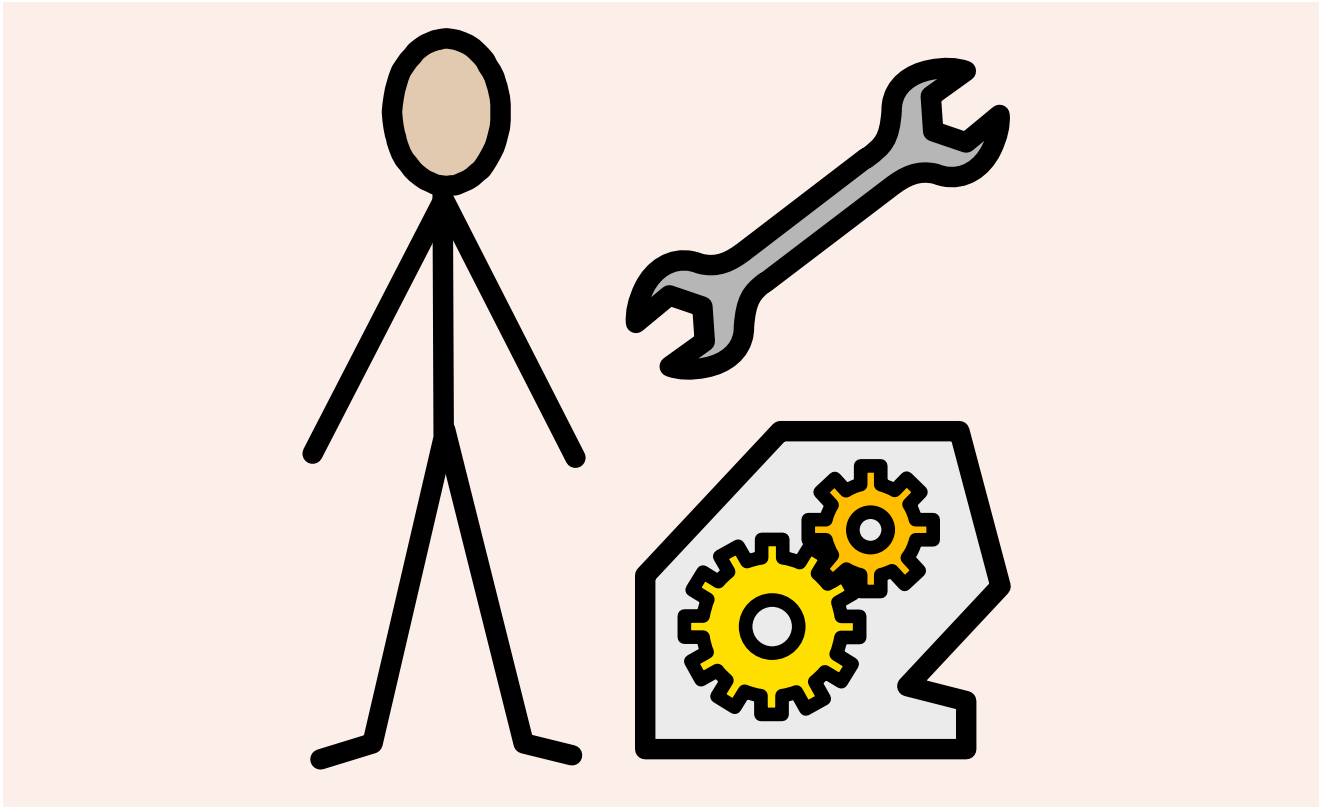


In 1923 Frank applied to join the Royal Air Force.

At 5 feet tall Frank failed the medical exams.

Frank trained hard, but failed again 6 months later.

He applied with a different name and was accepted.

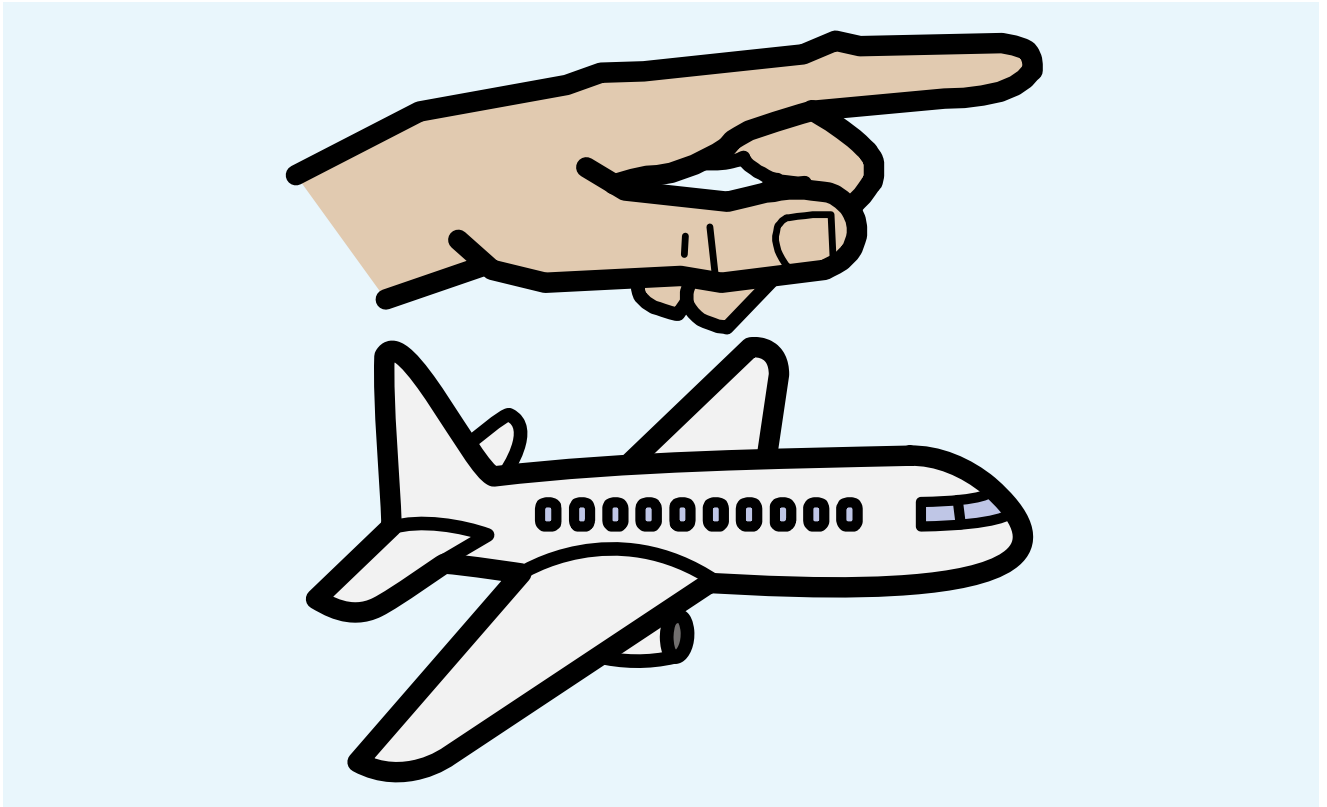


Frank began training to be an aircraft mechanic.

Frank was a mathematical genius.

Frank also enjoyed building model aircraft.

In 1926 he was recommended for officer training.

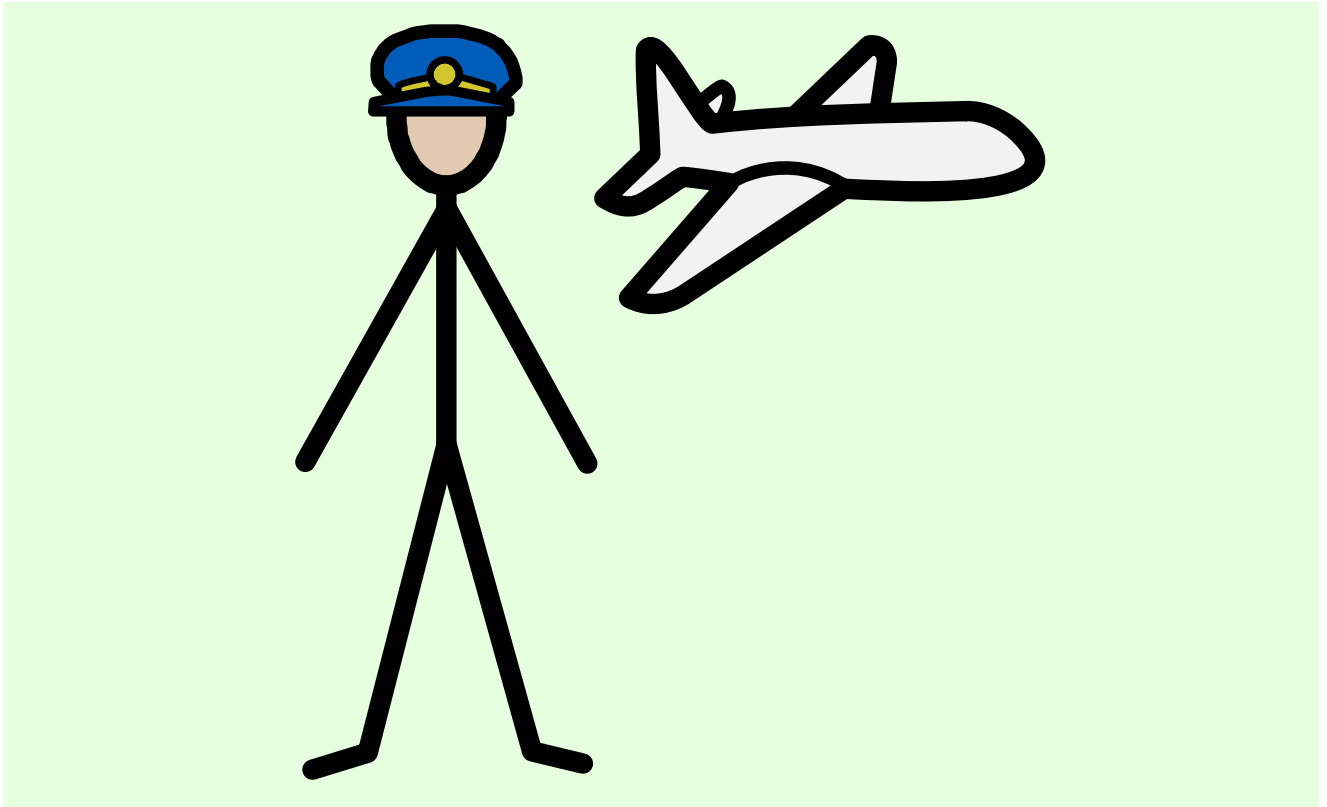


Frank's officer training included flying lessons.

He excelled in all his courses and at flying.

Frank excelled as a low flying daredevil.

He also wrote a thesis on the future of airplanes.

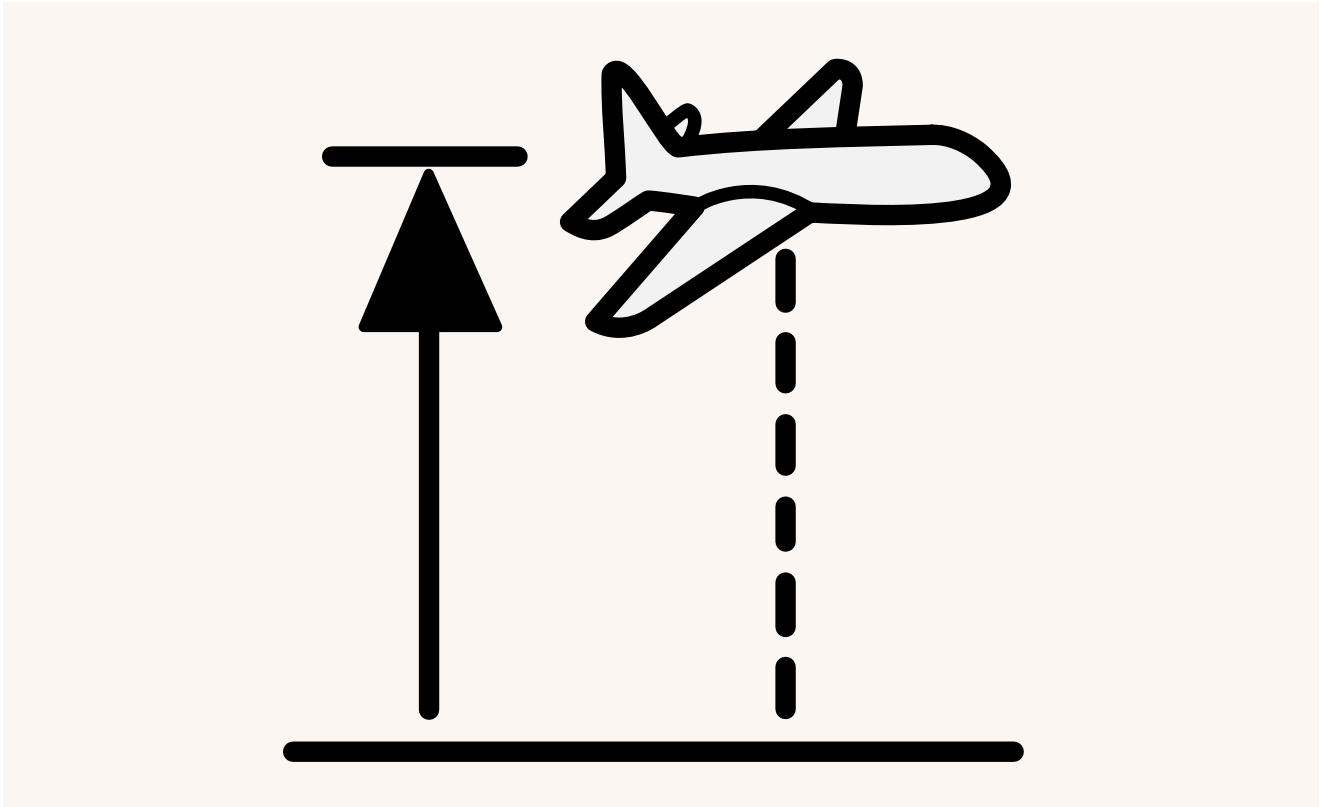


Frank was promoted to Flying Officer in 1930.

Frank also married his fiancée Dorothy in 1930.

Frank then became a test pilot for sea planes.

He flew in 20 different types of sea planes.

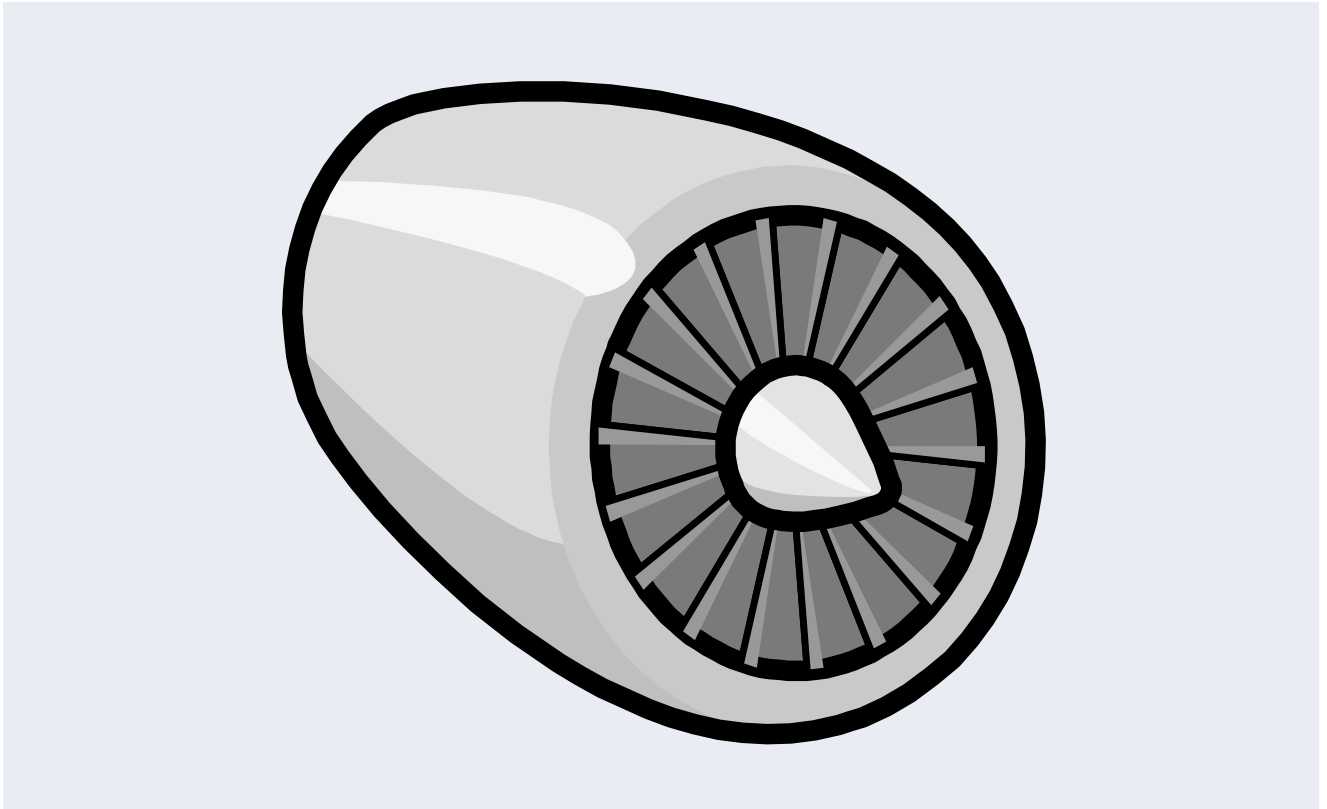


At the time aeroplanes used propellers as engines.

Propeller planes could not fly very high.

Frank realised planes needed to fly much higher.

High altitude planes could fly further and faster.

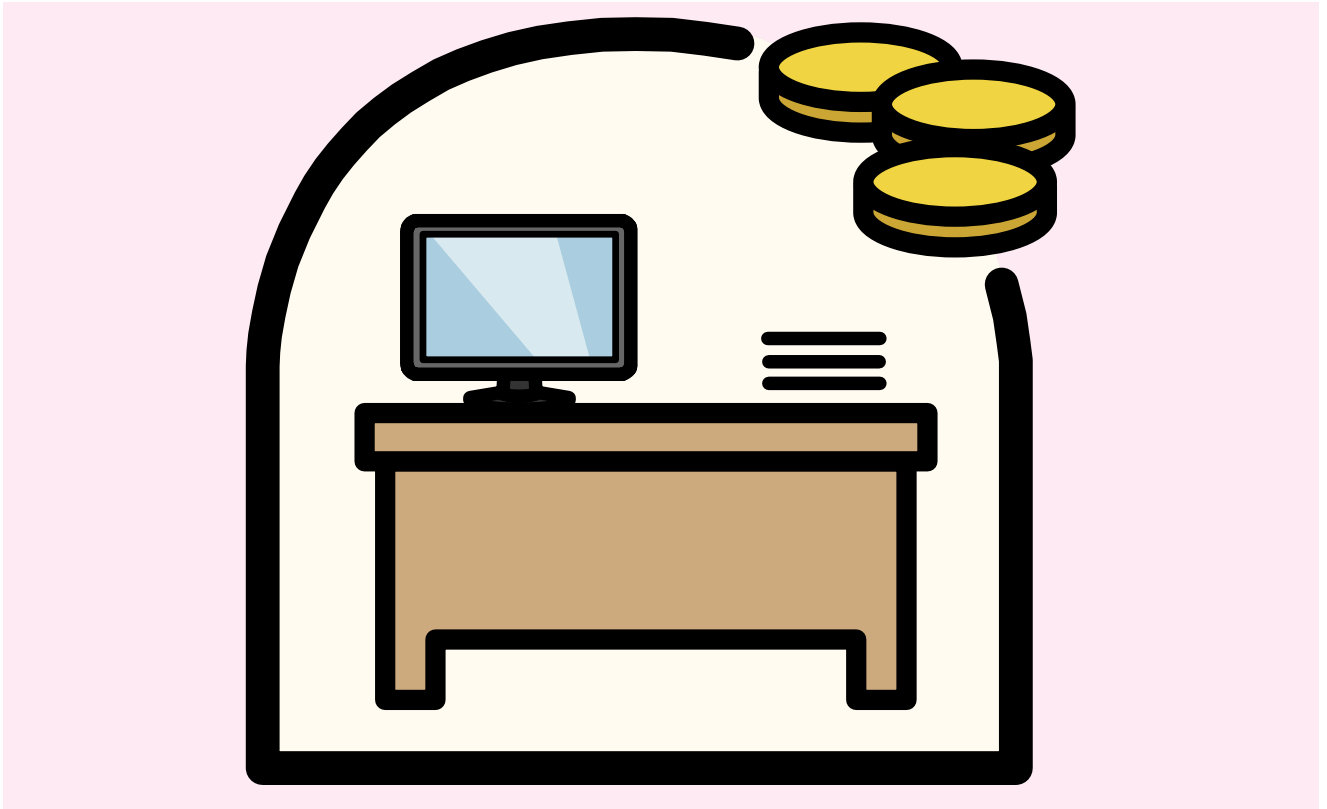


Frank invented a new engine called a jet.

Frank shared the idea with the RAF.

The RAF didn't believe the jet would work.

The RAF refused to help Frank develop it.

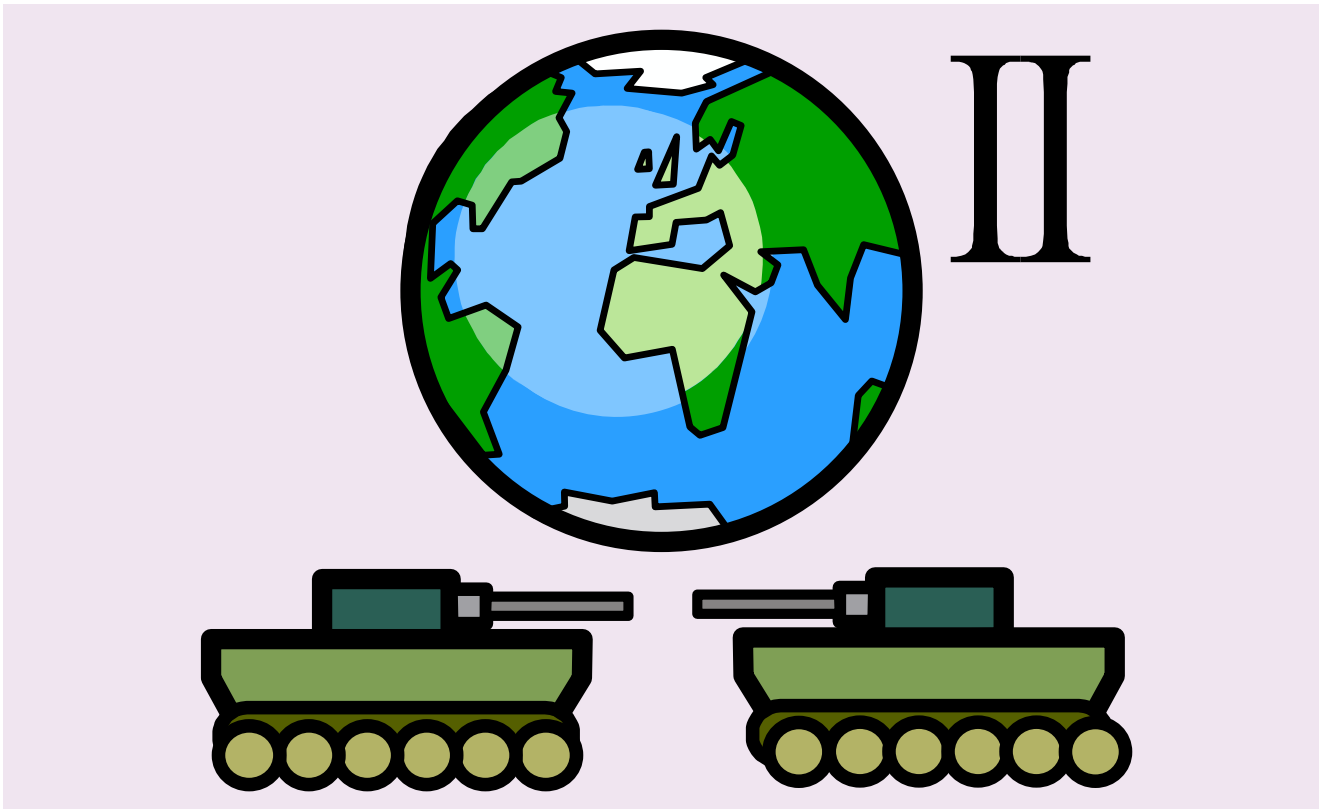


Frank refused to give up on his invention.

Frank patented his jet engine idea in 1930.

He founded a company to develop the idea.

Power Jets Ltd tested the 1st jet engine in 1937.

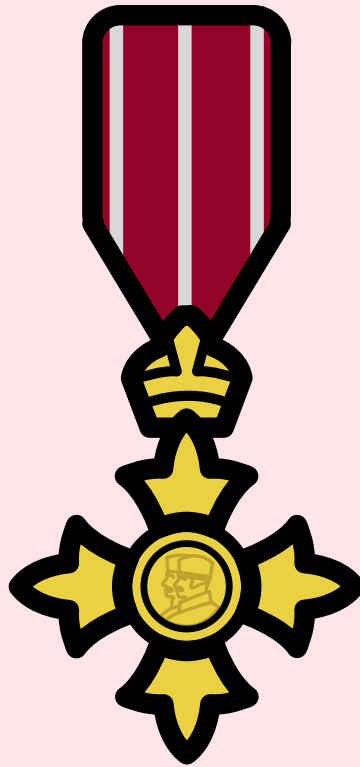


In 1939 World War 2 began.

The British government now began supporting Frank.

Frank built a jet for a real aircraft.

Frank's first jet plane flew in May 1941.

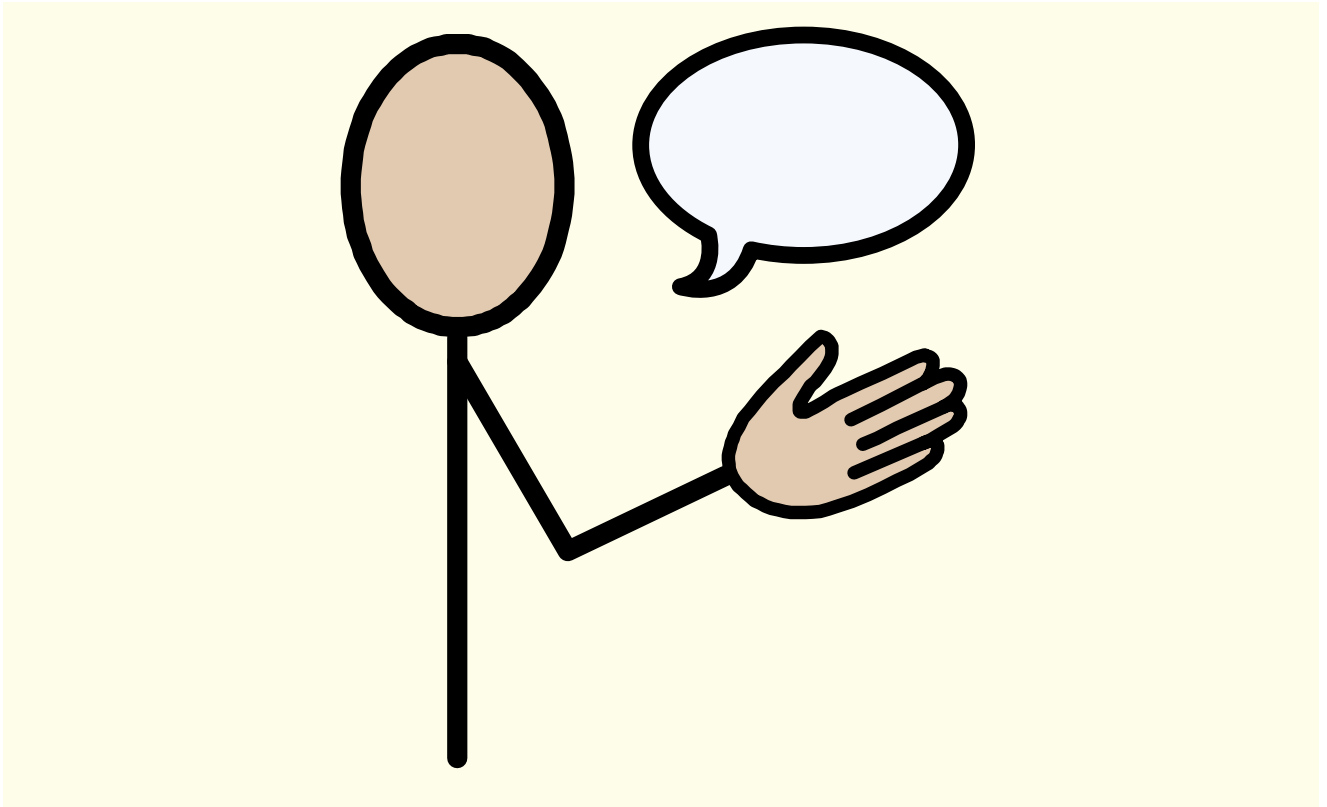


In 1943 Frank was promoted to Wing Commander.

In 1944 Frank was awarded an OBE.

Frank was promoted to Group Captain in the RAF.

Frank retired from the RAF in 1948.

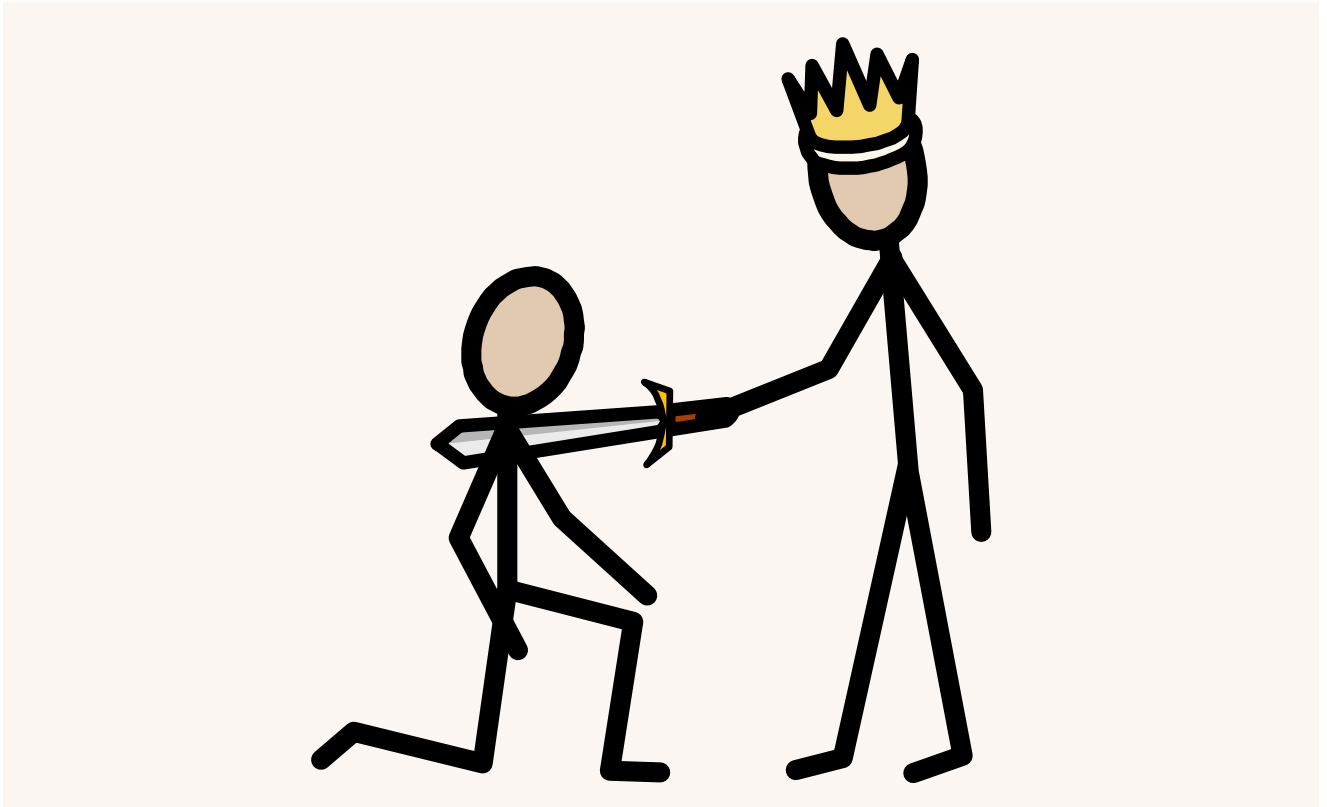


Frank worked as a technical advisor on jets.

He visited the US, Africa, Asia and the Middle East.

In 1976 Frank emigrated to the United States.

He died in Maryland on 9th August 1996.

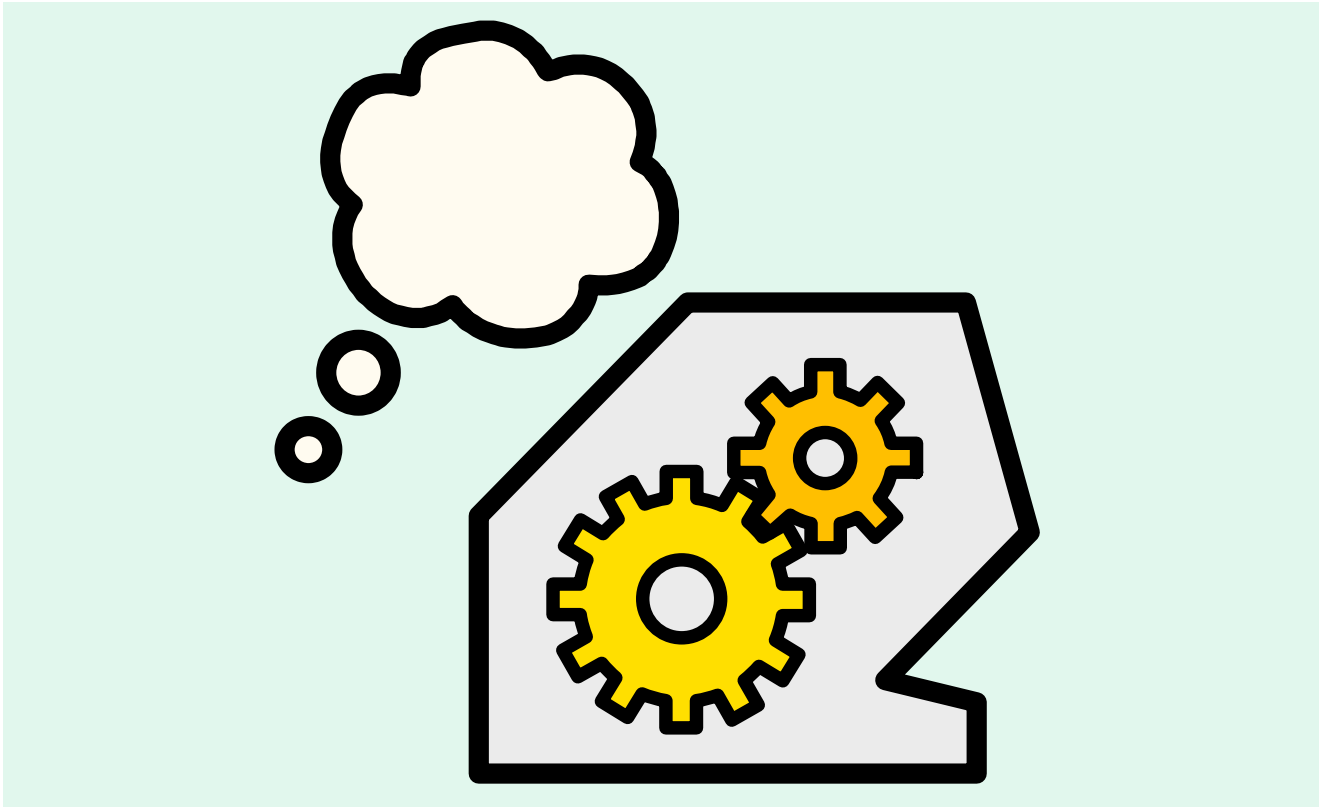


Frank received a knighthood for services to the RAF.

Frank was knighted by King George V.

Many memorials commemorate Frank and his jet.

In Farnborough there is the Whittle memorial.

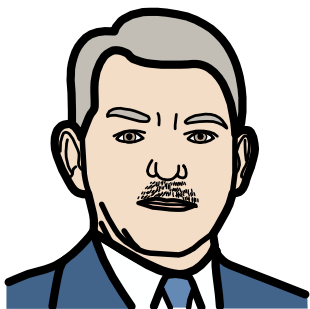


Frank's invention had a huge impact on air travel.

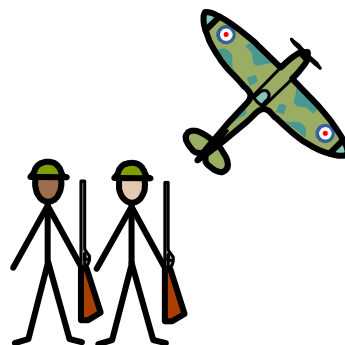
Jet planes can fly higher than other aeroplanes.

Jet planes can fly faster and further.

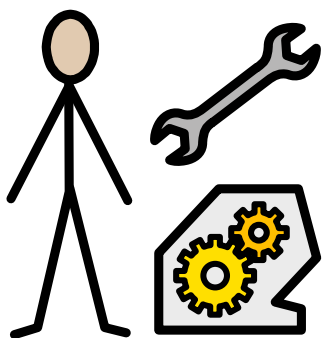
Most modern aircraft use the jet engine for power.



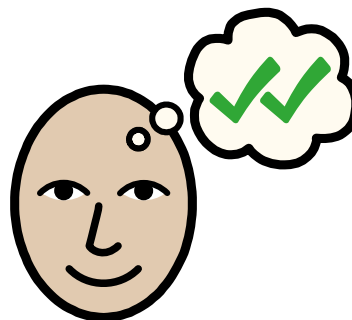
Frank Whittle



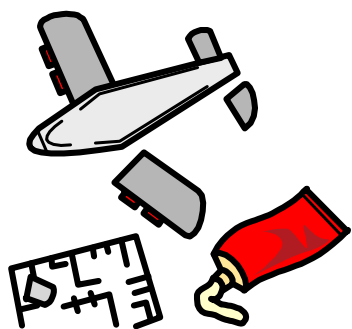
RAF



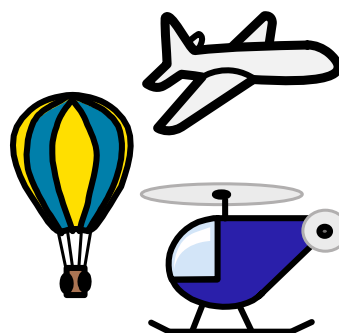
mechanic



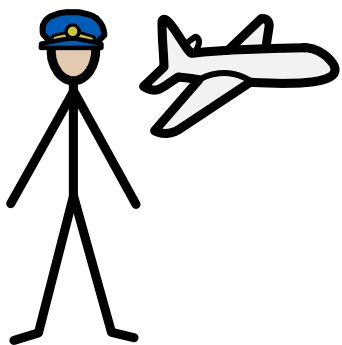
genius



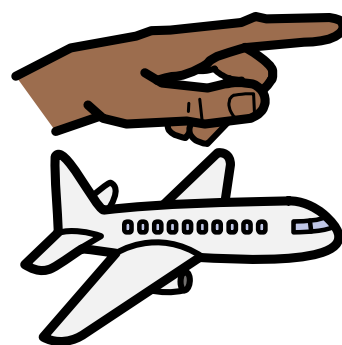
model



aircraft



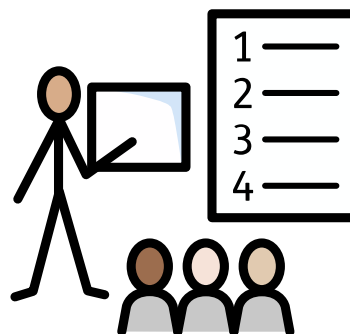
officer



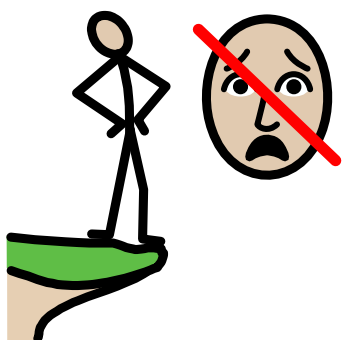
flying



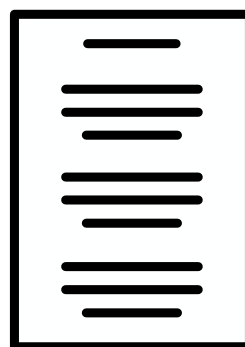
excelled



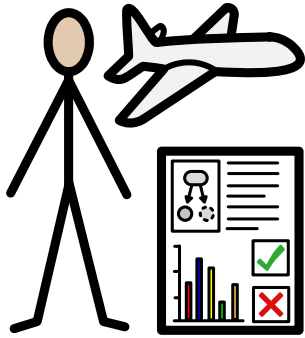
courses



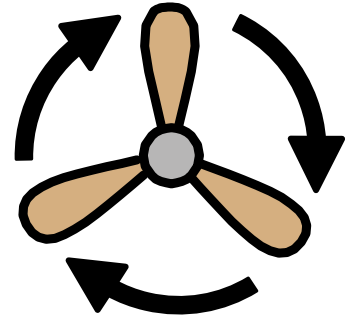
daredevil



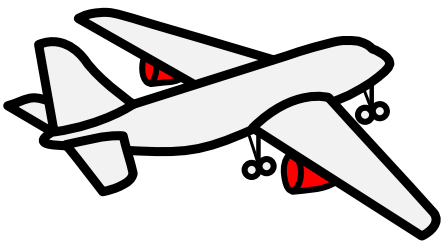
thesis



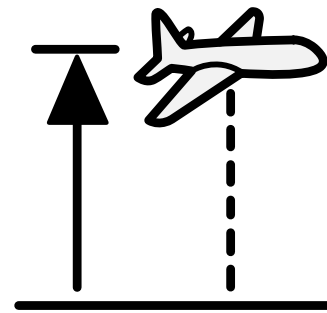
test pilot



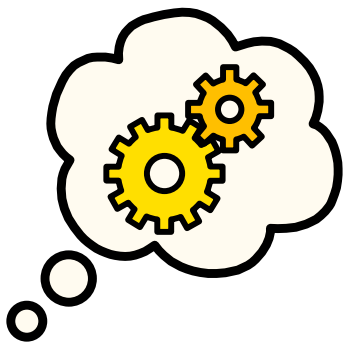
propellers



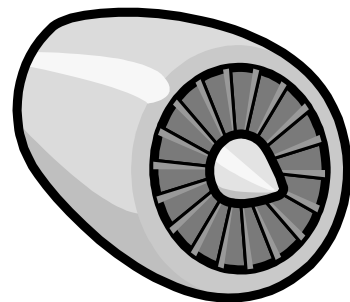
engines



high altitude



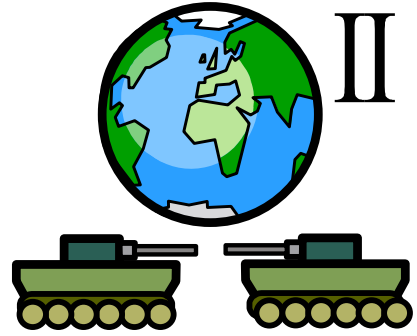
invented



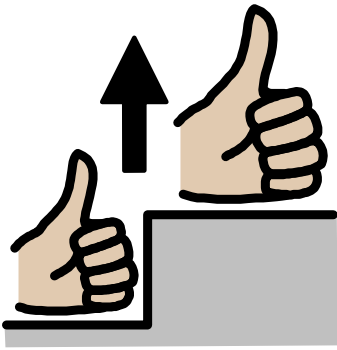
jet



company



World War 2



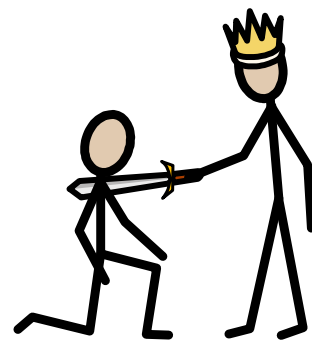
promoted



OBE



retired



knighted