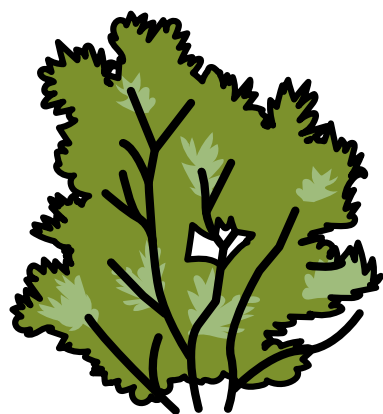
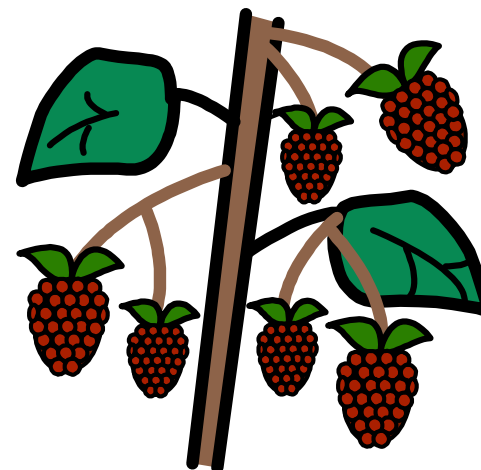
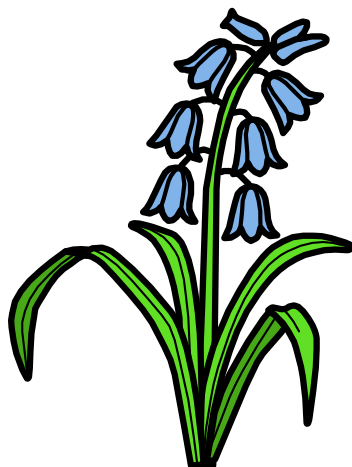
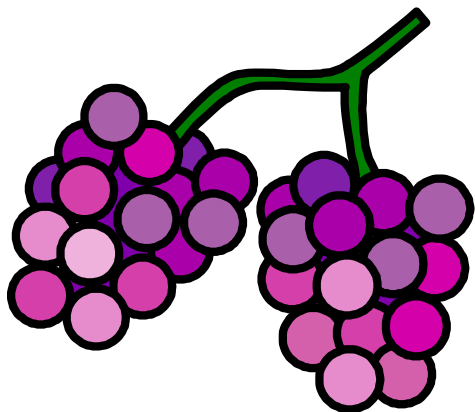
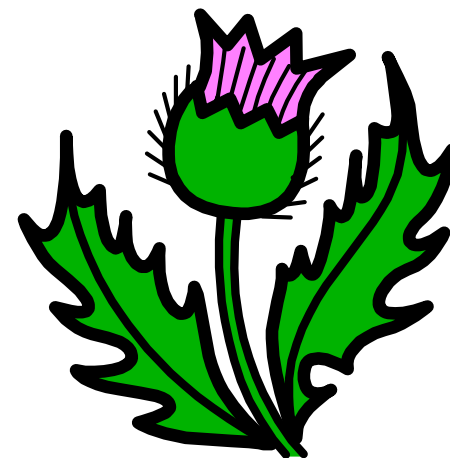
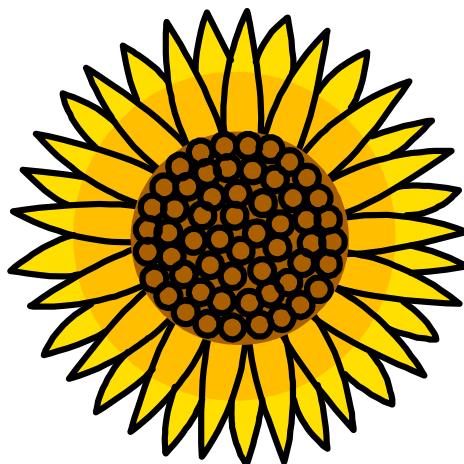
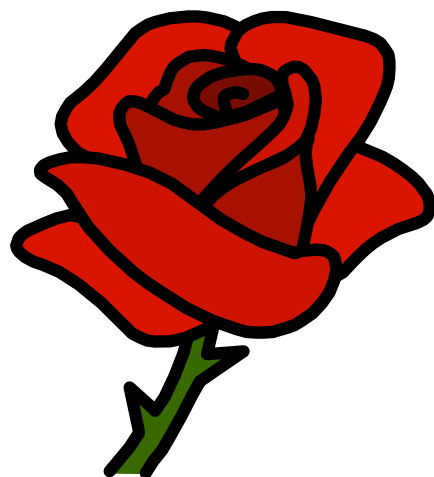
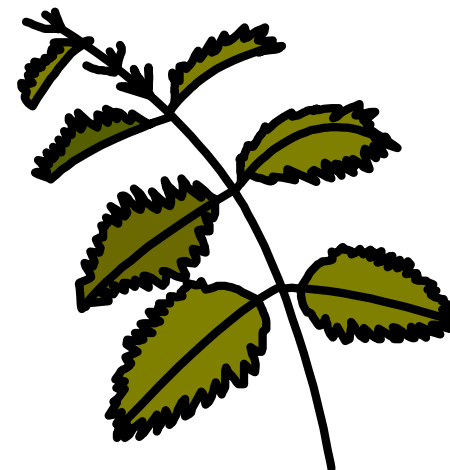
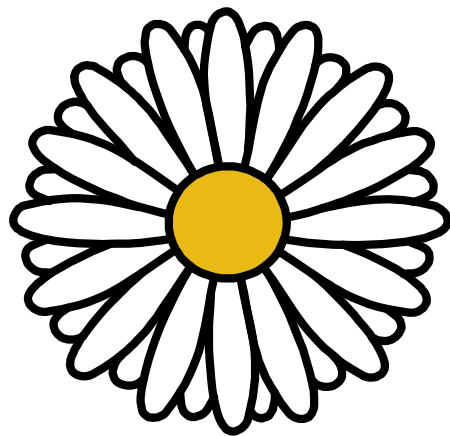


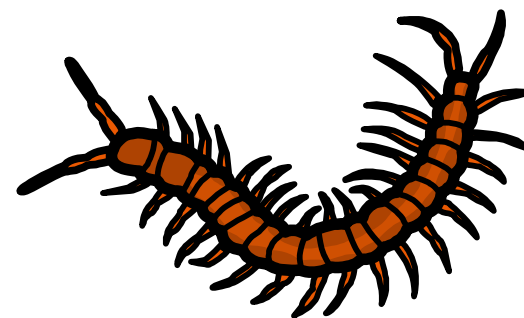
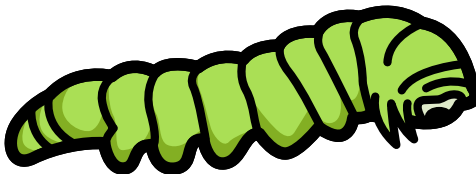
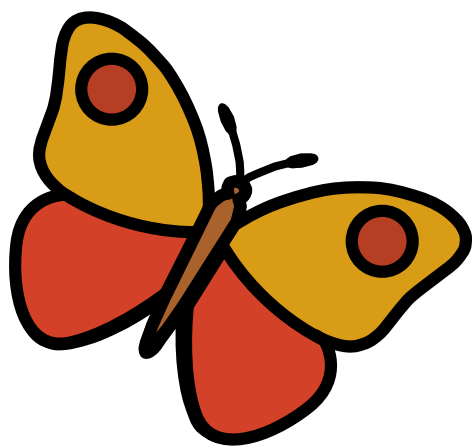
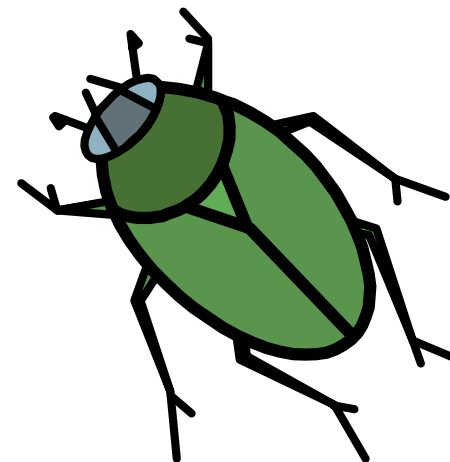
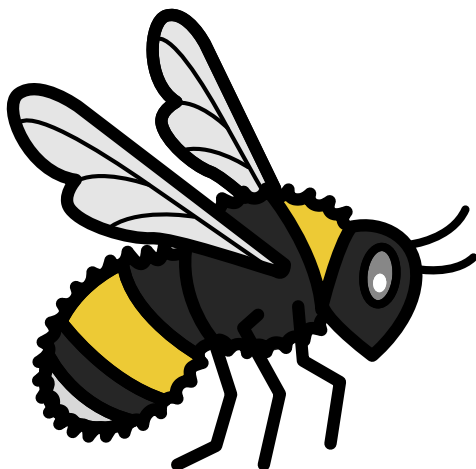
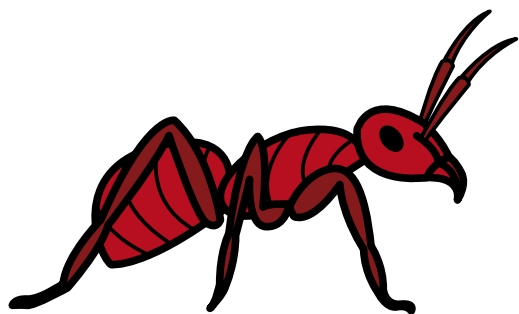
Pairs



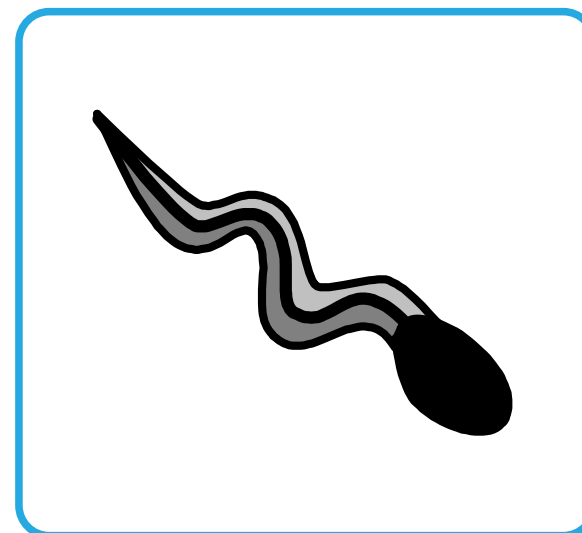
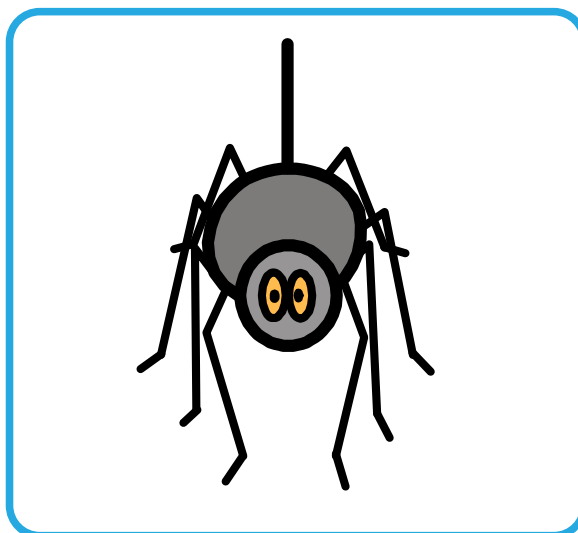
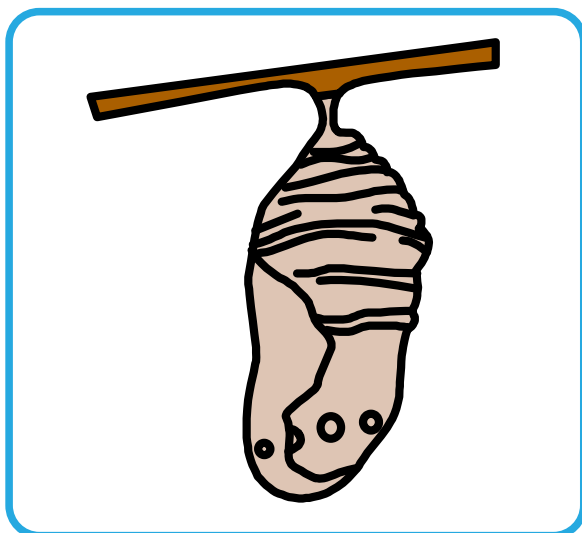
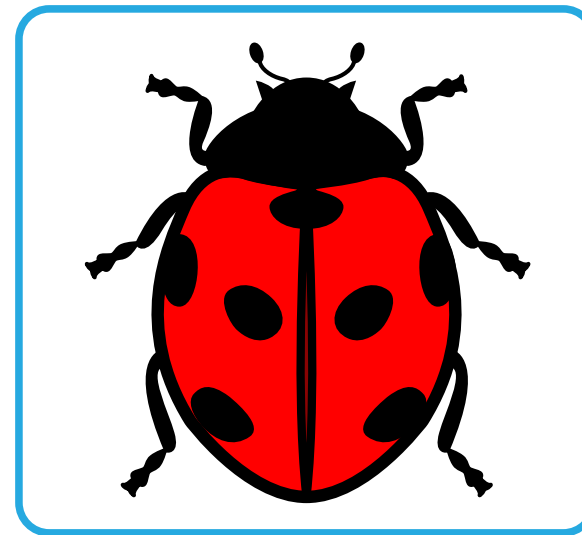
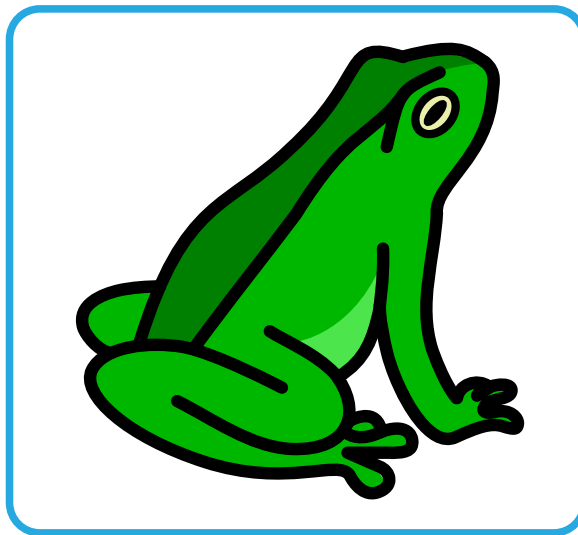
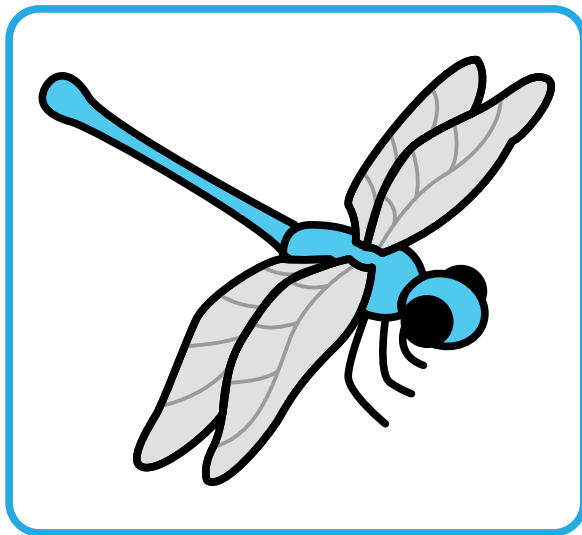
Pairs



Pairs



Pairs



How to Play

Pairs - How to Play

Print two sheets of pictures, cut out and laminate for extended use. The copies can be printed onto thin card if a laminator is not available.

Turn cards face down on table then take turns to turn over 2 cards each and try and find a matching pair. If a matching pair has not been found then cards are placed face down again and the next person takes their turn. The person with the most matching pairs at the end of the game is the winner.

Lotto - How to Play

Print each player two copies, one to be cut out and one to place the cut cards onto. Each player is given one complete copy and the rest are cut out and placed face down on the table. The players take turns to turn one card over and place matching picture onto their copy.