

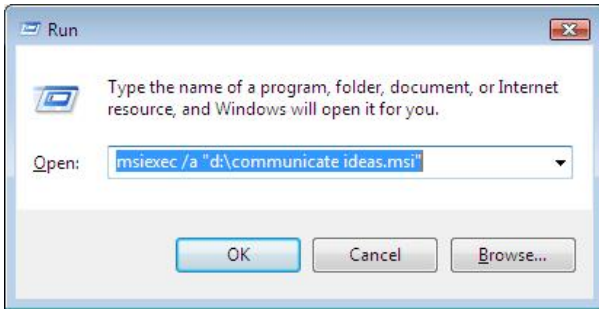


Communicate: Ideas Network Installation

To install Communicate: Ideas onto a network, you should perform an administrative install. This will allow you to create a pre-configured installer that contains your preferred folder locations.

You can then deploy the created MSI across your network as normal (for example via Group Policy or your network management console) or run it on as many clients as you have a license for.

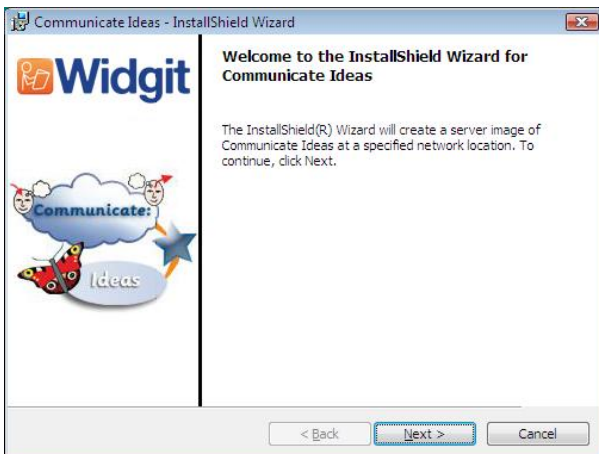
Creating the MSI



Insert the application CD. Go to 'Run' from the 'Start' menu, and enter:

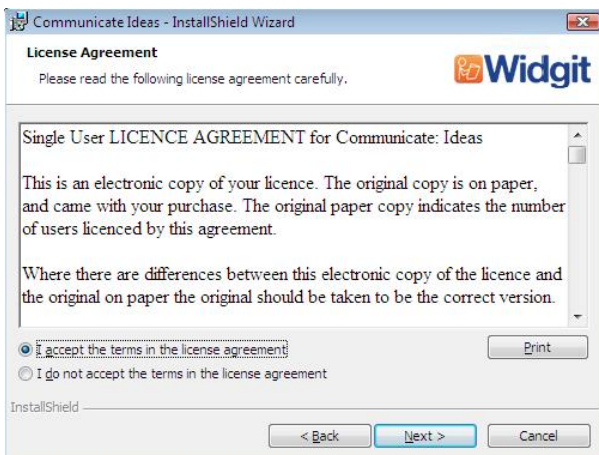
msiexec /a "d:\communicate ideas.msi".

(If your CD-Rom drive has a different drive letter than D, make sure you type this instead.)



After a pause, the administrative installation will begin.

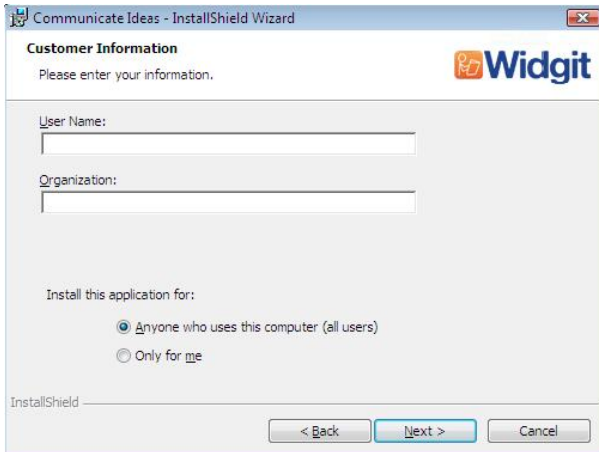
Click **'Next'** on the welcome screen to continue.



The license agreement will then be displayed on screen.

Click **'I accept the terms of this license agreement'** then **'Next'** to proceed.

Clicking **'Cancel'** will stop the installation.



Enter a User name and Organisation name in the fields provided.

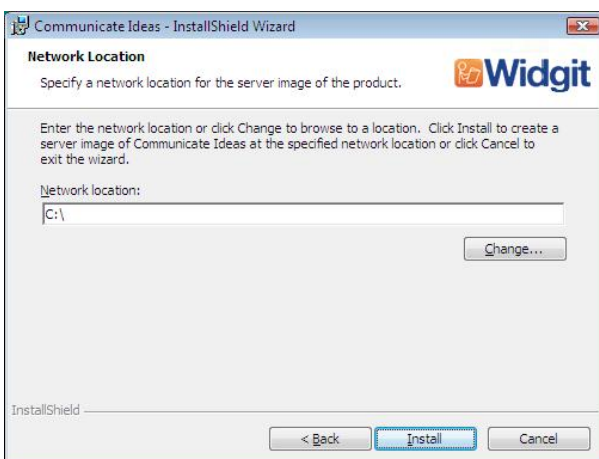
Click '**Next**' to proceed.



You will then be asked where you would like Communicate: Ideas to be installed to on your target machine.

On this screen you will also be asked if you want to install the speech engine with the program. If you choose to install it, the speech engine will be installed to the 'program files' directory on the target machine.

Click '**Next**' to continue.



On the next screen, you will be prompted for a location to create your installation image. This is the msi file the target machines will use to perform their own installation.

Browse to a location on your network where you want to create the file.

Click '**Install**' to create your MSI.

Remember: An administrative installation will not install the program. It will save your installation choices and use them to create a new MSI installer.

If you have any questions, please contact support:
Widgit Technical Support **T:** 01926 333680 **E:** support@widgit.com