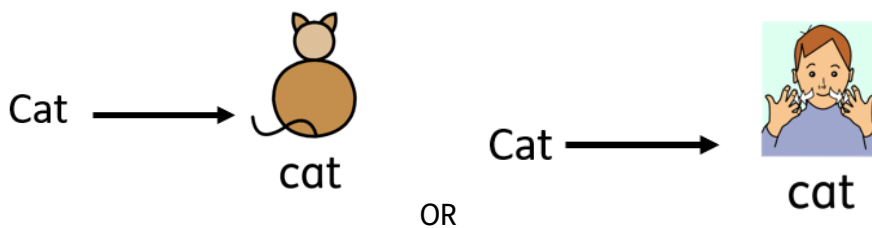




Wordlists

Overview

A **Wordlist** is a file that links words with graphics. If you type 'cat' in **Symbol Mode** while using InPrint 4, the loaded **Wordlist** will automatically display the symbol associated with that word. You can choose to enable or disable different **Wordlists** in InPrint 4, depending on how you wish to use the program. You can also use InPrint 4 to create your own **Wordlist**.



Types of Wordlists

There are different types of Wordlist available:

The Widgit Symbols

This is the main, default Wordlist. It is linked to the entire **Widgit Symbol Database** and is the only Wordlist to use the Smart Symbolisation function. With each software update the Widgit Database will also be updated – ensuring you have the most up-to-date vocabulary. You cannot edit this Wordlist, but you can select your default symbol choices.

User Wordlist

This **Wordlist** is associated with your **Windows Profile**, therefore any changes that you make to this **Wordlist** will **only** be accessible by you. There is one **User Wordlist** per user. This **Wordlist** is always active.

Topic Wordlists

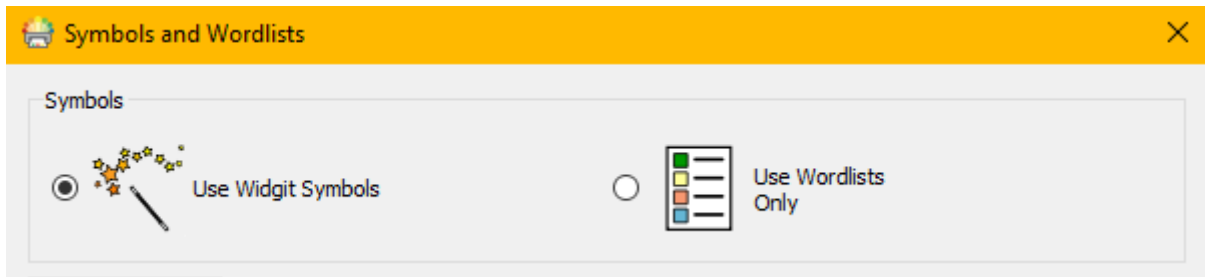
These **Wordlist** files are generally reserved for short **Wordlists** for small sets of topic-specific words. These files are also easily shared amongst different users. When a document that is using a **Topic Wordlist** is saved, the **Wordlist** and all of its entries will be integrated with the file. If you load this file on another computer, the **Wordlist**, along with the document content will be accessible. Most resource packs are likely to have a **Topic Wordlist** included, such as an 'Ancient Egyptian History' wordlist for example.

Symbol Set Wordlist

This **Wordlist** file is the largest kind of Wordlist and is usually comprised of alternative symbol sets that are often made by third-party companies like Makaton. This Wordlist is not easily shared like a **Topic Wordlist** because it is not integrated with InPrint 4 documents although it is recognised by it.

Loading Wordlists

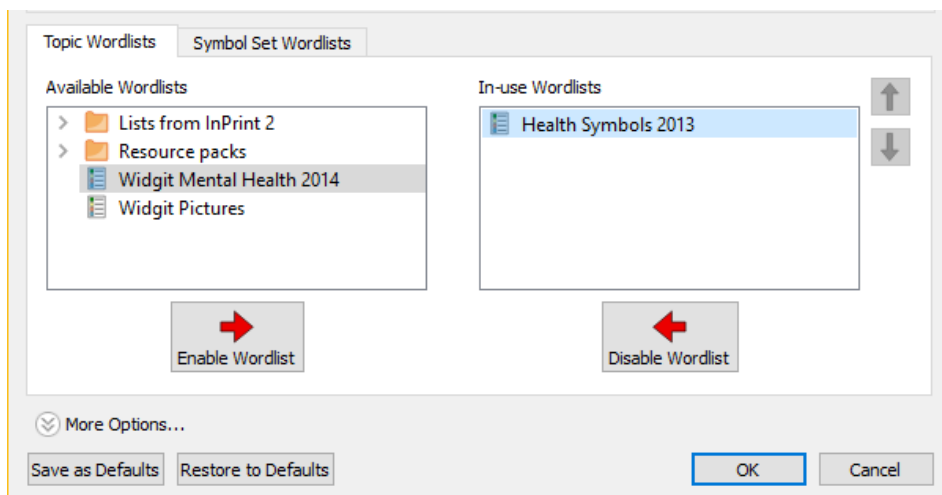
To load **Wordlists**, you select **Symbol Settings** from the **Symbols** tab. You can choose between **Use Widgit Symbols** (in addition to any enabled Topic Wordlist) and **Use Wordlists Only**, which will only symbolise according to the enabled Wordlists you have selected.



Wordlist Section

The panel on the left will display all of the available lists that you can **Enable**.

The panel on the right will display all of the **Enabled Wordlists** for your current document. You can select a **Wordlist** and Disable if required.



The **Wordlist** at the highest position will automatically be given symbol preference over any other **Wordlists**. You can use the up and down arrows to the right of this panel to change the order of the **Wordlists**.

Multiple Wordlists

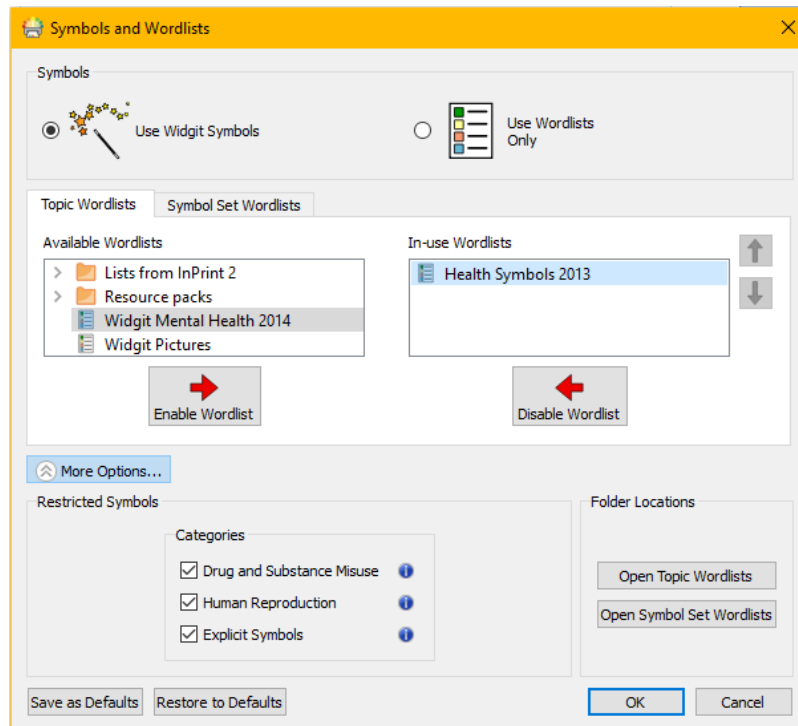
Mixing different symbol sets can confuse the reader, as different symbols sets visualise concepts differently. If you choose **Use Widgit Symbols** and then **Enable a Symbol Set Wordlist** you will receive a warning message. You will be able to proceed but it is not recommended.


If you know the sets and their structure then it is OK to mix sets, for example mixing a **Photo Library** with the **Widgit Symbols**. If you do not, it is best to avoid mixing as they may represent concepts in different ways.

Restricted Symbols

Some symbols in the **Widgit Database** could be upsetting or not suitable for some users. Restricted symbols are not displayed by default when you first launch InPrint 4.

To change access to restricted symbols, use the button next to **More Options** to reveal all the possible restricted symbols.



Hovering over  will show more information about each category. Tick the box next to each one you wish to have enabled.

If you wish to turn these on for all documents (for example the software is on a machine only you can access) then click on **Save as Defaults**.